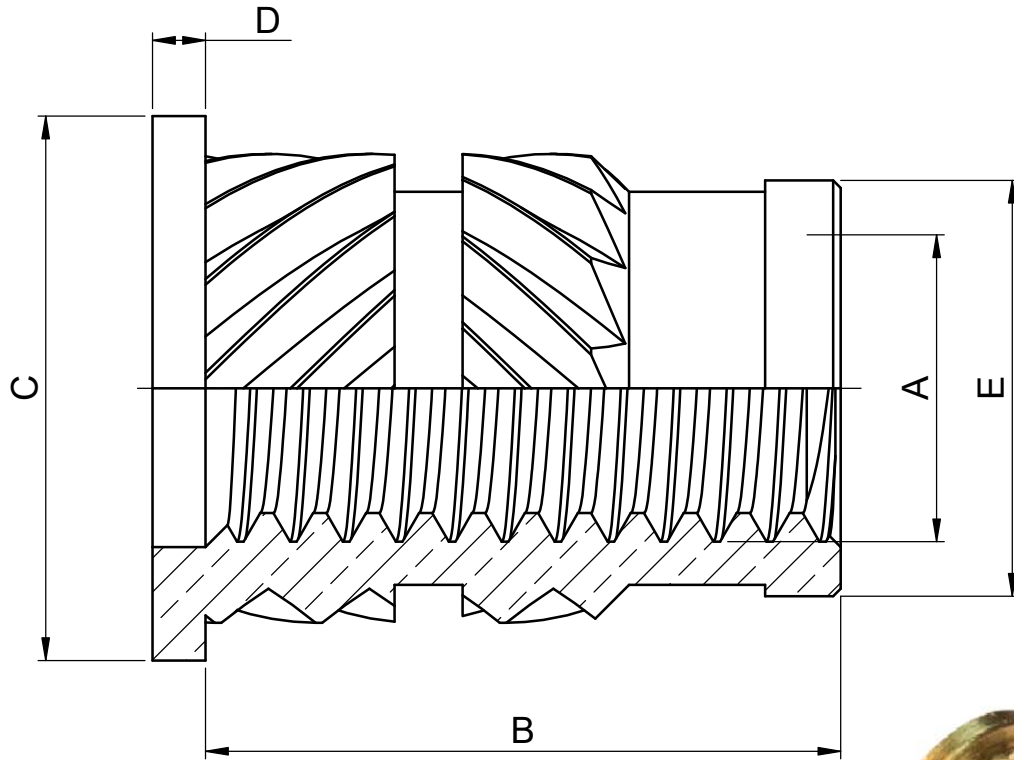


Issue	Change	Position	Date	Sign.
-------	--------	----------	------	-------



Part number:	Thread size "A"	Length "B"	Ø "C"	Length "D"	Ø "E"
Rotex 001	M2	4,0	5,0	0,6	3,1
Rotex 002	M3	5,8	5,5	0,6	3,9
Rotex 003	M4	8,4	7,0	0,7	5,5
Rotex 004	M5	9,5	8,0	1,0	6,3

All dimensions in mm.

Material Brass/Mässing		Blank, dimension		Heat treatment		Surface treatment	
Permissible deviations for dimensions without indication of tolerances						Surface roughness unless specified	
Machined parts acc.SS-ISO-2768-1		Castings acc.SS-ISO-8062		Fuse welded constr. acc.SS-EN ISO 13920		Ra µm ✓	
Designed by GB	Drawn by GB	Date 2018-05-30	Product Brass insert for plastic			Tol.system acc. ISO Replaces	
Prod.appr. GB 2018-06-05	Design appr. GB 2018-06-05	Scale 10:1	Title Rotex 001-004			Replaced by	
						Rotex 001-004	
						Rotex 001-004	

DENNA RITNING ÄR REHOBÖT AB:s EGENDOM. SKYDDAD ENLIGT GÄLLANDE LAG. THIS DRAWING IS THE PROPERTY OF REHOBÖT AB. PROTECTED BY PREVAILING LAW.

4

3

2

1